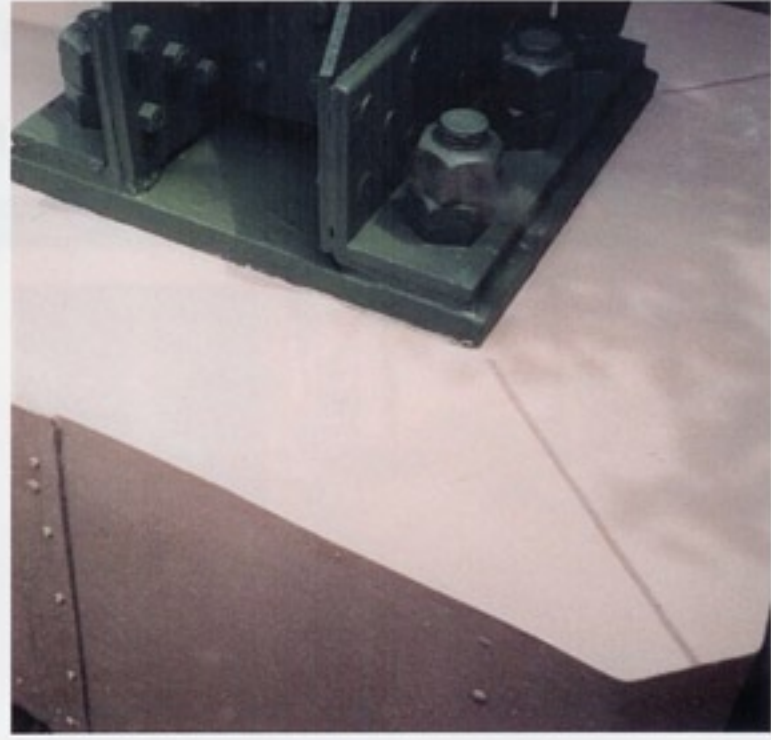




The remaining 2" of void space is filled with **FX-70-6 Epoxy Grout**.



Expansion joints are cut into **FX-70-6 Grout** and sealed with **FX-516 One Component Urethane Joint Sealant**.



The outside face of the **FX-70® Jacket** and the **FX-70-6 Epoxy Grout** are coated with **FX-70-9 LV Coating**.



The steel tower supports are cleaned to remove peeling paint and primed with **FX-509 Rust Inhibitive Primer**.



Two (2) coats of **FX-509 Rust Inhibitive Coating** are applied over the **FX-509 Primer**.



The remaining concrete bases are cleaned and protected with **FX-460 Breathable Masonry Coating**.



Overall view of completed job.